

## I. Description

TEMPer1F thermometer is a measurement device using USB port to connect to a computer. It has an outer sensor with waterproof functions. It can measure the temperature of the machine and the environment accurately. It must be connect to the computer to start working. TEMPer1F can be used in computer room, weather, environment and special environment emperature testing.

## II. Function & Feature

- Range of measuring: TEMPer1F: -40~+125 C; -104~+257F;
- Resolution rate: 0.06C
- Precision:  $\pm 2C$ ;
- Electricity:< 5mA;
- Support Windows NT,XP, Vista,Win7,Win8,Win10;
- Memory requirement: 20M
- Data auto save to be txt Or csv form, can be open by excel;
- Send mails function
- Graph transfer function

### New Function

#### (1) TXT Special button:

As long as you long pressing the **TXT button** for 1 second, you can read the temperature no matter in excel, text or word form without running software. If to stop the reading, press the **TXT button** again. Easy operation! Solve your installed software and cross-platform used troubles!



#### (2) Caps lock and Num Lock:

You don't want to install software, OK! You can use the Caps lock and Num lock function. As long as you long press the caps lock or Num lock for 3 seconds, you can read the temperature no matter in excel, text or word form without running software. Then you can create curve.



www.pcsensor.com			
type:fm75			
caps lock:on/off/++ fw:1.3			
num lock:Off/on/--			
date	time	c	interval
2018/1/22	18:33	23.56	1
2018/1/22	18:33	23.56	1
2018/1/22	18:33	23.56	1
2018/1/22	18:33	23.56	1
2018/1/22	18:33	23.56	1
2018/1/22	18:33	23.56	1
2018/1/22	18:33	23.56	1
2018/1/22	18:33	23.56	1
2018/1/22	18:33	23.56	1
2018/1/22	18:33	23.56	1
2018/1/22	18:33	23.56	1
2018/1/22	18:33	23.56	1
2018/1/22	18:33	23.56	1
2018/1/22	18:33	23.56	1

**(3) PCsensor USB series products, can be used on the mobile phone through OTG interface line.**



**Q1: What are these products mainly include?**

A: TEMPer2 ,TEMPerNTC, TEMPer1F, TEMPer1F\_H1, TEMPerHUM, TEMPer1K3, TEMPer1K4, TH1000 ISO, TEMPerF, TEMPe8 series (TEMPer8\_D2, TEMPer8\_D4 TEMPer8\_D8,TEMPer8\_H2 TEMPer8\_H4, TEMPer8\_H8 TEMPer8\_T2, TEMPer8\_T4, TEMPer8\_T8, etc.)

**Q2: what are the common OTG interface of mobile phone?**

A:Xiaomi,Samsung, etc.

**Q3: how to validate if your mobile phone is in line with the OTG?**

A: Use OTG line connecting a mouse or keyboard, see if the mouse is normally used in conformity with the OTG.

**III. Installing instruction**

## 1. Software installing instruction:

a) please go to our website to download TEMPer.rar;

b) Uninstall the USB driver

c) Install dotnetfx.exe, if your computer system is Vista, maybe you don't need to install this process. Dotnetfx.exe is framework 2.0 of Microsoft, you can download it from the website of Microsoft; Decompress TEMPer.rar to your computer, and running TEMPer setup.exe.

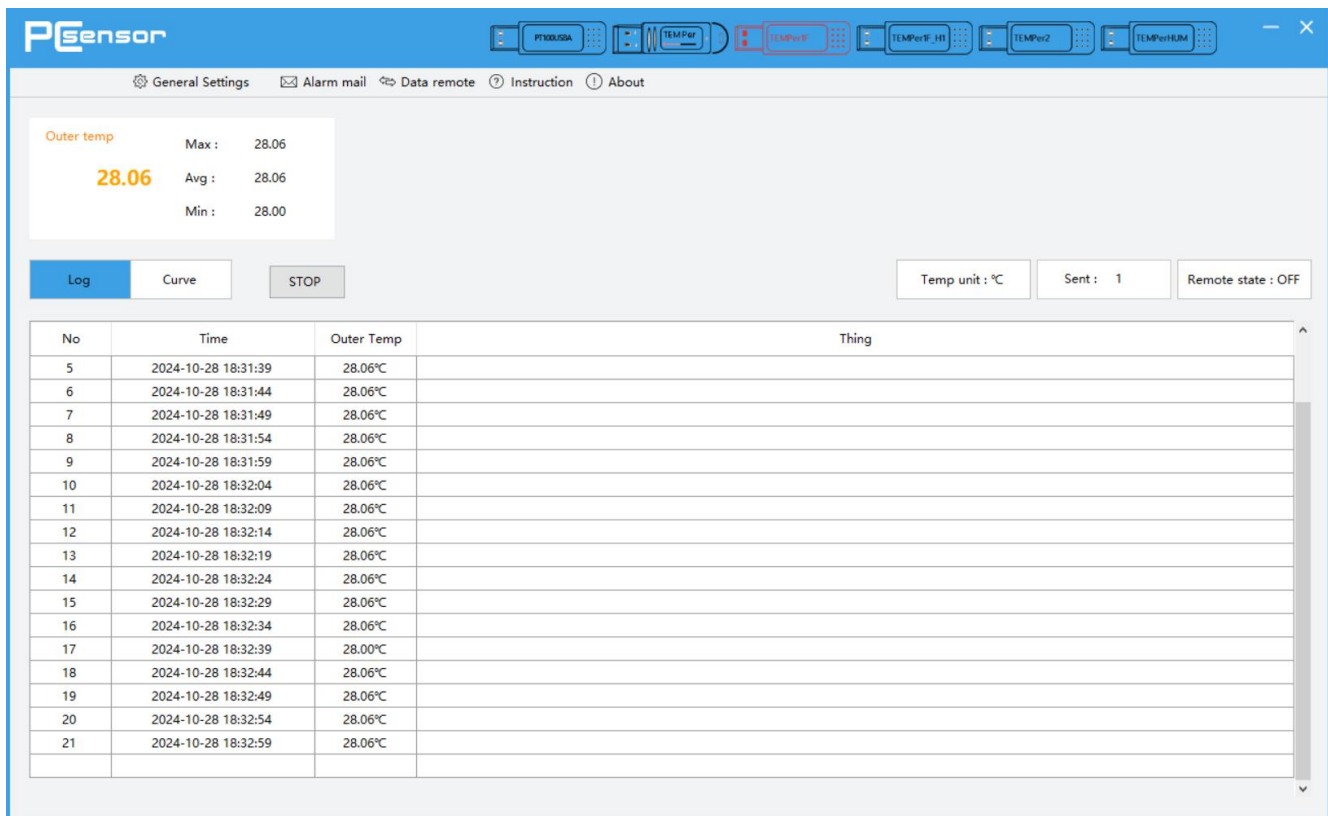
## 2. Hardware installing:

Plug the thermometer into the USB port of the computer to connect it and running the TEMPerV25.9.exe.

## IV. Operating instruction (Note: Our software only supports windows system.)

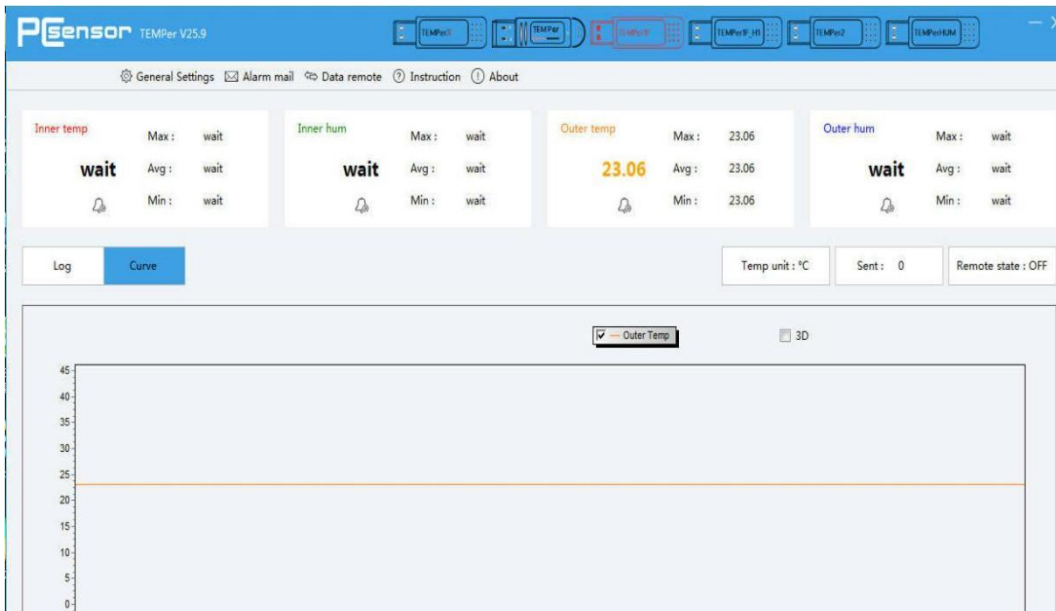
### 1) Log

Record the Real-time Temperature Data and Save Them in the Related File Automatically.  
(see picture4)



Picture 4 LOG

### 2) CURVES DISPLAY



Picture 5 Curve

### 3) Data remote

Click “Data remote”, Register new account and login (See Step1~Step3); then login the remote account.

The 'Register' dialog box contains the following fields and values:

- Account: test10
- Pass: \*\*\*\*\*
- Pass again: \*\*\*\*\*
- Name: Alina
- Telephone: 18926595573
- Company: RDing Tech

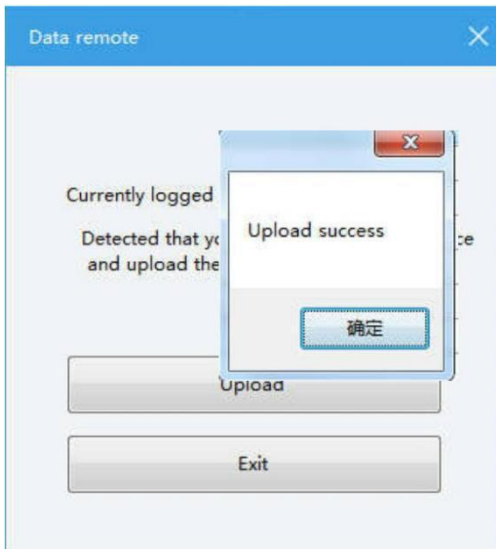
An 'OK' button is located at the bottom center.

Step 1

The 'Data remote' dialog box contains the following fields and elements:

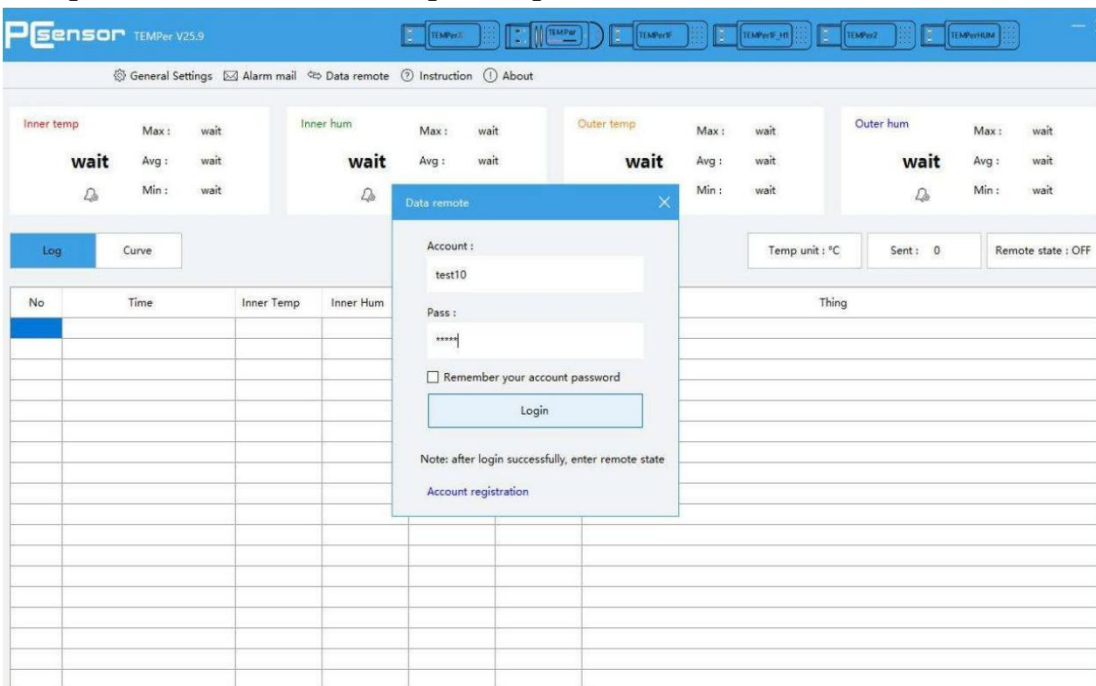
- Account: test10
- Pass: \*\*\*\*\*
- Remember your account password
- Login button
- Note: after login successfully, enter remote state
- [Account registration](#)

Step 2

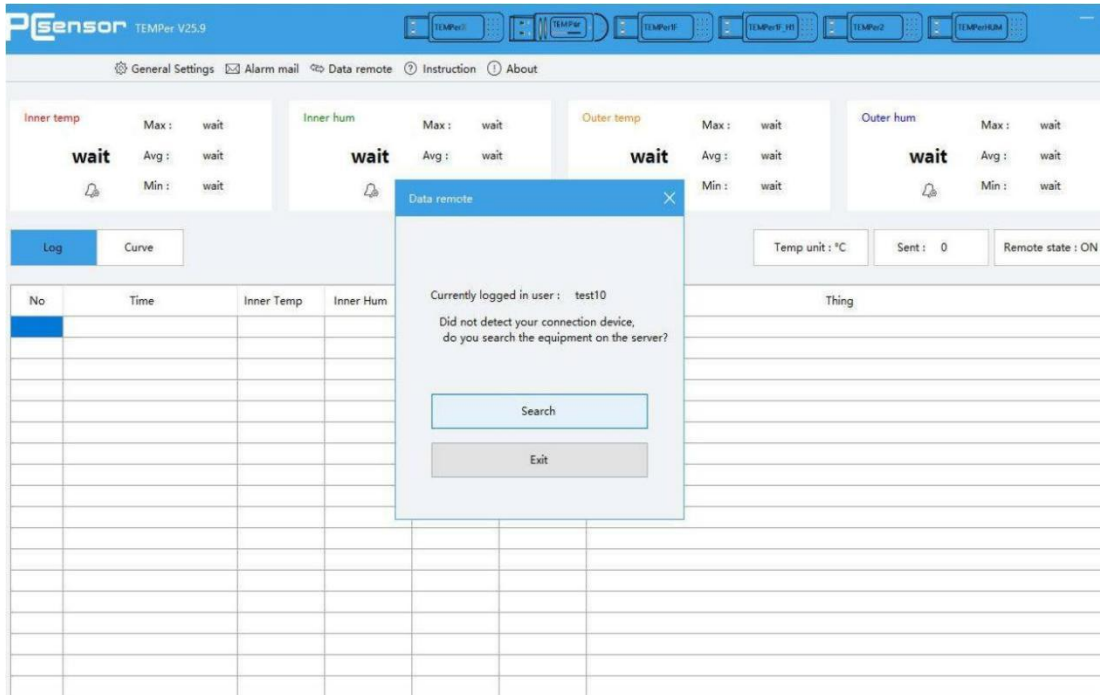


### Step 3

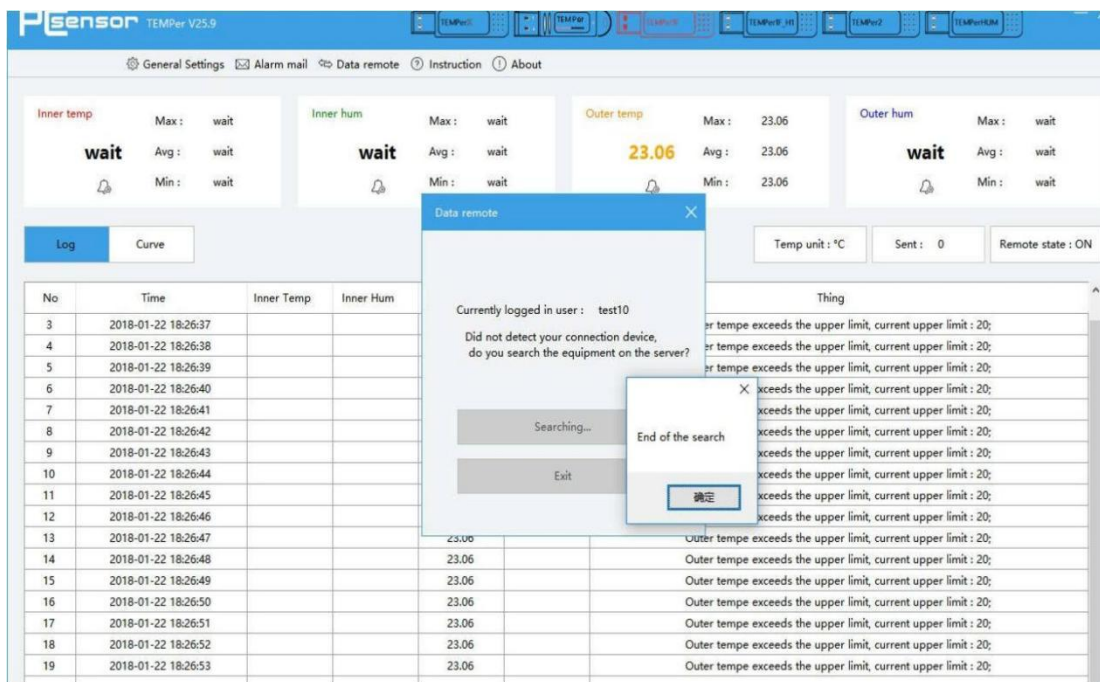
Then running the software on another computer and login the remote account. You will get the all temperature data. See the step 4~step6



### Step 4



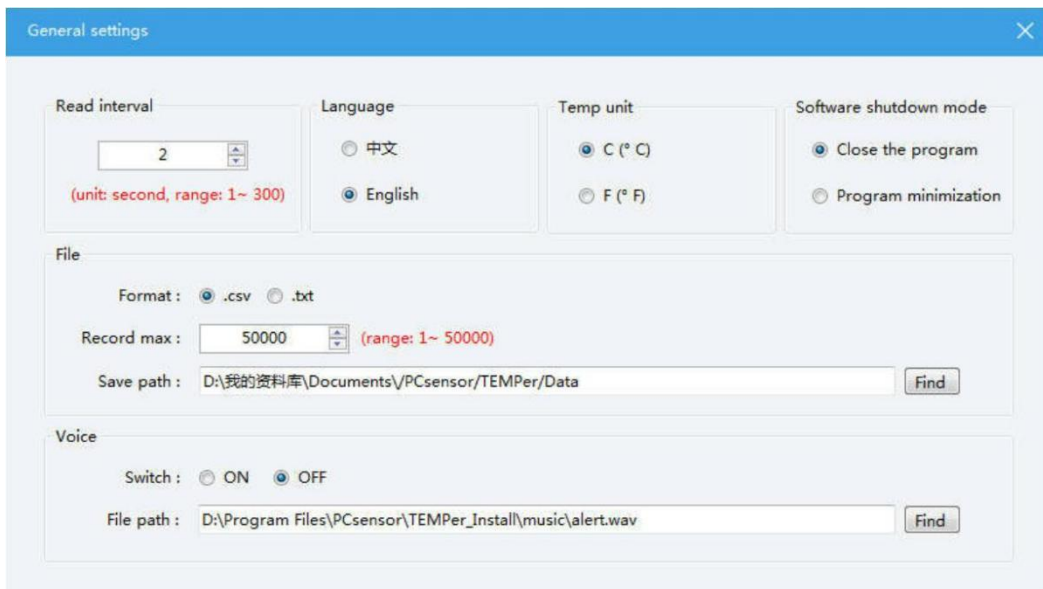
### Step 5



### Step 6

## 4) Setting

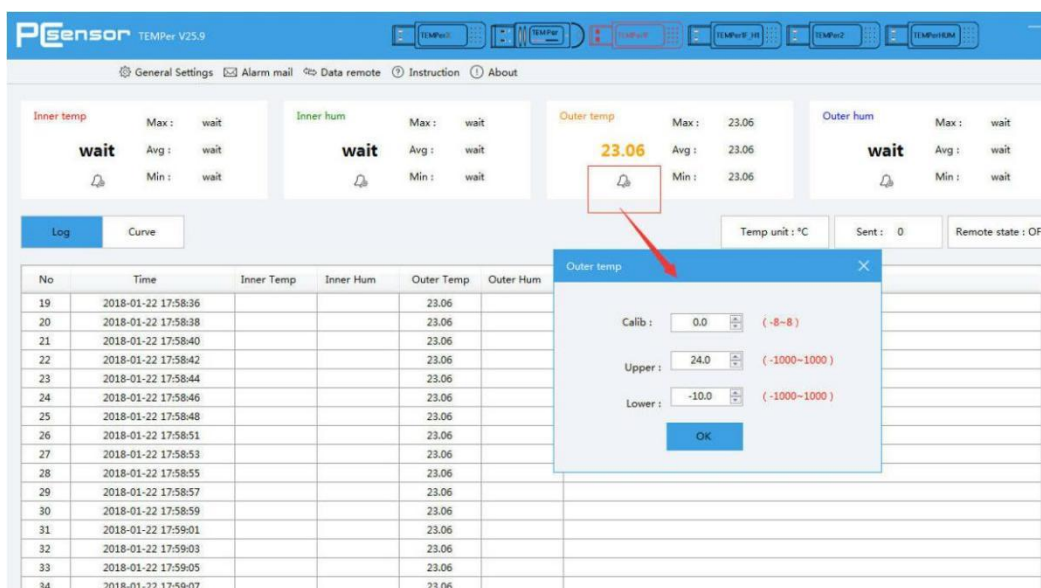
Click “General settings”, see the picture 6.



Picture 6

## 5) Alarm Setting

Each sensor has an alarm bell, Select the corresponding alarm bell to set the temperature of alarm and calibrate temperature. (See picture 7)



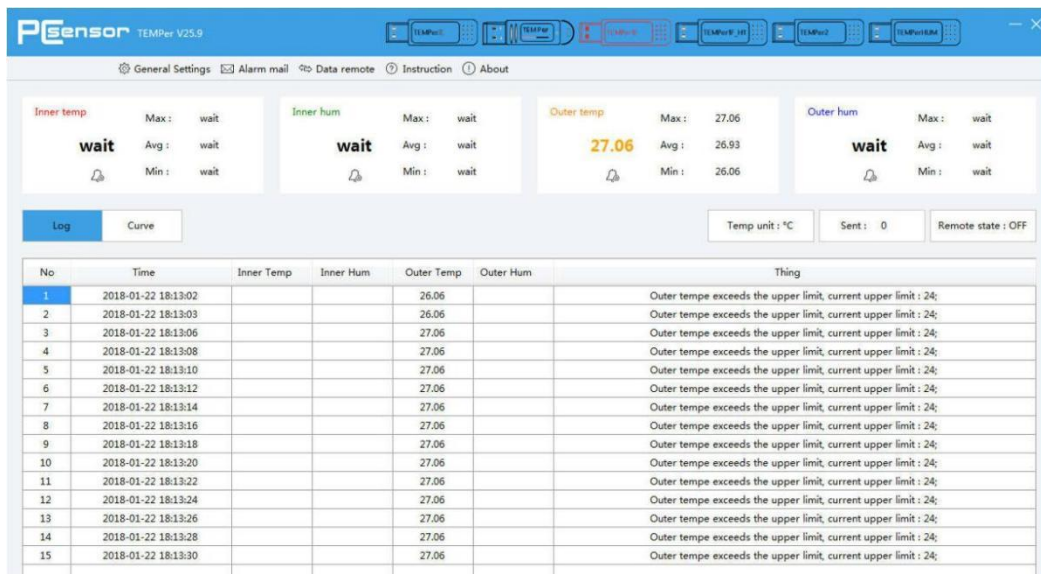
picture 7

## 6) Email function

Fill in the Related Information of Email and Save it. The Requirement of Send Email: Support POP3/SMTP and Other Server Port. Receive Email you can fill in two.

## Related Function:

- 1) when the Alarm is on, it will send the Email to Specified Email Box automatically if the Temperature Reach the Alarm Limit.
- 2) It can send Email Continuously to the Specified Mail Box. You can set the Sending Interval, and then it will send the Email to the Specified Mail Box at Set Intervals. (See picture 8 ~Picture9)



Picture 8

The screenshot shows the Alarm mail configuration window. It is divided into several sections:

- Send email:** Account: sales@pcsensor.com, Password: \*\*\*\*\* (masked), SMTP: smtp.pcsensor.com, Port: 2626.
- Receive email:** Name1: tech\_support@pcsensor.com, Account1: Alina, Name2: (empty), Account2: (empty).
- Send content:** Theme: temperature alarm, Content: temperature alarm test.
- Send mode:** Alarm (selected), Continuous (1 minute).
- Email status:** ON (selected), OFF.
- Save:** A button to save the configuration.

Picture 9

## V. Packing specification

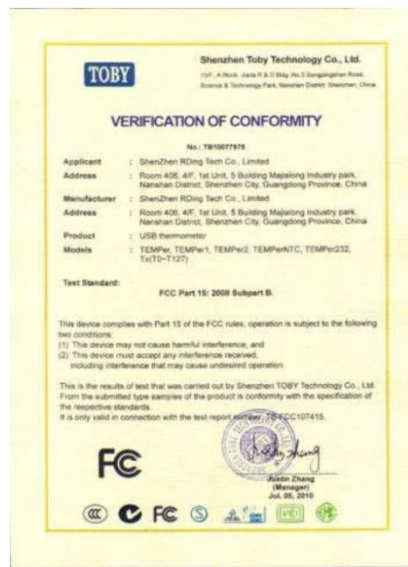
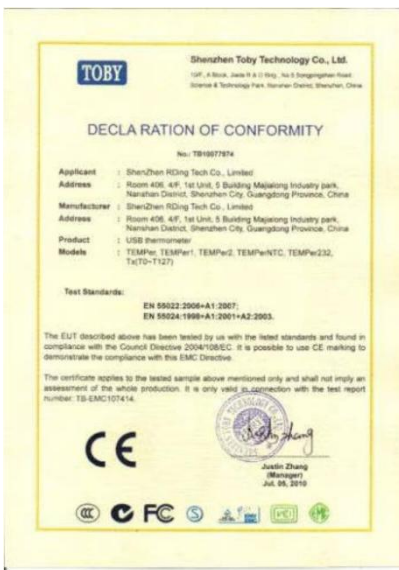


Name of the part	Specification	Quantity
TEMPer1F	70*10*18mm; 30g;	1
Sensor	Cable length : 1m	1
Product Verification Certificate	-	1

**(Weight of TEMPer1F: 70g)**

(NOTICE: In order to reduce the volume of goods and reduce the freight, and sometimes we will get rid of plastic packaging products)

## VI. Certificate



**Note:** If you want to download the latest software, please download from here:  
[www.software.pcsensor.com](http://www.software.pcsensor.com)