

## 1. Description

Hid TEMPerHUM thermometer & hygrometer is a measurement device using USB port to connect to a computer . It can measure the temperature and the humidity of the machine and the environment accurately and can calculate the dewpoint automatable. It must be connect to the computer to start working .Hid TEMPerHUM can be used in computer room, weather, environment and special environment temperature and humidity testing.

## 2. Function & Feature

Range of temperature: TEMPerHUM -40~+85 C; -40~+185F;

Resolution rate of temperature: 0.06C

Temperature sensor :

(1) +/- 0.5C accuracy (Typical)

(2) +/-1C accuracy (Maximum @ 0 to 70C)

Range of humidity:0~100RH%

Resolution rate of humidity:0.03RH%;

Precision of humidity: +/- 4.5 RH% 20RH%~80 RH%;

Voltage: 4~6V;

Electricity:< 10 mA;

Voltage : 5V

Support Windows NT,XP, VIST;

Memory requirement: 20M

Data autosave to be txt Or csv format, can be open by excel;

Send mails function

Graph transfer function

## New Function

### **(1)TXT Special button:**

As long as you long pressing the **TXT button** for 1 seconds, you can read the temperature and humidity no matter in excel, text or word form without running software. If to stop the reading, press the **TXT button** again . Easy operation! Solve your installed software and cross-platform used troubles!

### **(2) Caps lock and Num Lock:**

You don't want to install software, OK! You can use the Caps lock and Num lock function.

As long as you long press the caps lock or num lock for 3 seconds, you can read the temperature and humidity no matter in excel, text or word form without running software. Then you can create curve.



A	B	C	D	E
	CAPS LOCK:ON/OFF/++			
	NUM LOCK:OFF/ON/-- UNIT:C %			
2011-6-21	04:41 PM	48.25	30.87	3
2011-6-21	04:41 PM	47.33	30.9	3
2011-6-21	04:41 PM	46.9	30.92	3
2011-6-21	04:41 PM	46.5	30.89	3
2011-6-21	04:41 PM	46.18	30.72	3
2011-6-21	04:41 PM	46.24	30.71	3
2011-6-21	04:41 PM	46.27	30.67	3
2011-6-21	04:41 PM	46.26	30.62	3
2011-6-21	04:41 PM	46.26	30.56	3
2011-6-21	04:41 PM	46.28	30.5	3
2011-6-21	04:41 PM	46.34	30.46	3
2011-6-21	04:41 PM	46.48	30.44	3
2011-6-21	04:41 PM	46.54	30.38	3
2011-6-21	04:41 PM	46.6	30.35	3
2011-6-21	04:41 PM	46.66	30.33	3
2011-6-21	04:42 PM	46.76	30.34	3
2011-6-21	04:42 PM	49.88	30.46	3
2011-6-21	04:42 PM	51.43	30.55	3
2011-6-21	04:42 PM	53.64	30.66	3

**(3) PCsensor USB series products, can be used on the mobile phone through OTG interface line.**

**Q1: What are these products mainly include?**

A: TEMPer2 ,TEMPerNTC, TEMPer1F, TEMPer1F\_H1, TEMPerHUM, TEMPer1K3, TEMPer1K4, TH1000 ISO, TEMPerF, TEMPe8 series (TEMPer8\_D2, TEMPer8\_D4 TEMPer8\_D8,TEMPer8\_H2 TEMPer8\_H4, TEMPer8\_H8 TEMPer8\_T2, TEMPer8\_T4, TEMPer8\_T8, etc.)

**Q2: what are the common OTG interface of mobile phone?**

A: millet, samsung, etc.

### **Q3: how to validate if your mobile phone is in line with the OTG?**

A: Use OTG line connecting a mouse or keyboard, see if the mouse is normally used in conformity with the OTG.

### **3. INSTALLING INSTRUCTION**

Software installing instruction: please go to our website to download the process

a) Install dotnetfx.exe, if your computer system is Vista, may be you don't need to install this process. Dotnetfx.exe is framework 2.0 of Microsoft; you can download it from the website of Microsoft;

b) Decompress TEMPerV25.9.rar to your computer, and running TEMPerV25.9.exe.

Hardware installing:

Plug the Hygrometer into the USB port of the computer to connect it. If you plug it correctly the red light in the device will be turned on.

**5. Operating instruction (Note: Our software just only support windows system .)**

**1)LOG**

Record the Real-time Temperature Data and Save Them in the Related File Automatically. (see picture4)

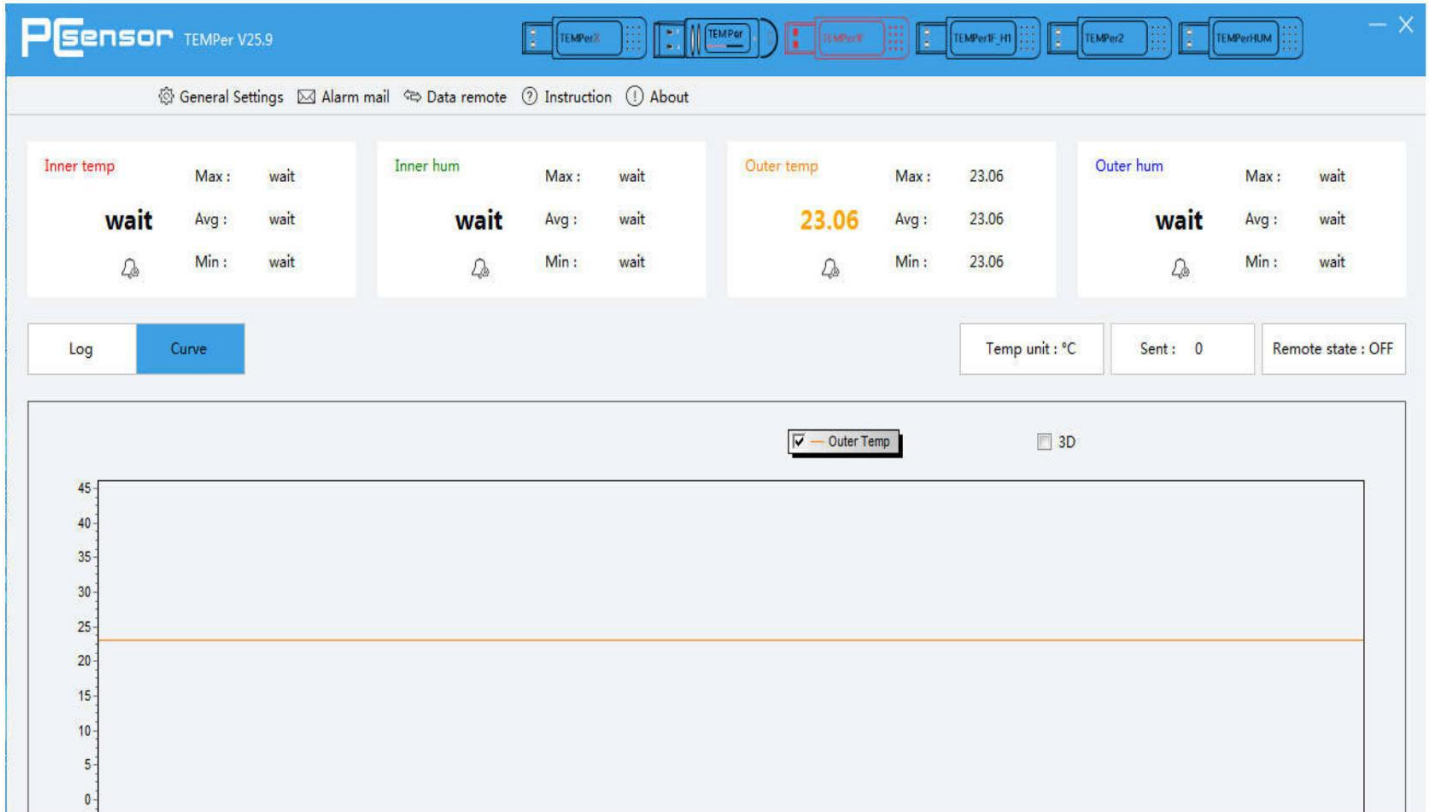
The screenshot shows the PCsensor TEMPer V25.9 interface. At the top, there are navigation links: General Settings, Alarm mail, Data remote, Instruction, and About. Below this, four sensor status cards are displayed:

- Inner temp:** Max: wait, Avg: wait, Min: wait. Status: wait.
- Inner hum:** Max: wait, Avg: wait, Min: wait. Status: wait.
- Outer temp:** Max: 23.06, Avg: 23.06, Min: 23.06. Status: 23.06.
- Outer hum:** Max: wait, Avg: wait, Min: wait. Status: wait.

Below the sensor cards, there are controls for 'Log' and 'Curve', and status indicators for 'Temp unit : °C', 'Sent : 0', and 'Remote state : OFF'.

No	Time	Inner Temp	Inner Hum	Outer Temp	Outer Hum	Thing
1	2018-01-22 18:08:55			23.06		
2	2018-01-22 18:08:57			23.06		
3	2018-01-22 18:08:59			23.06		
4	2018-01-22 18:09:01			23.06		
5	2018-01-22 18:09:03			23.06		
6	2018-01-22 18:09:05			23.06		
7	2018-01-22 18:09:07			23.06		
8	2018-01-22 18:09:09			23.06		
9	2018-01-22 18:09:11			23.06		
10	2018-01-22 18:09:14			23.06		

Picture 4 LOG  
2) CURVES DISPLAY



Picture 5 Curve

### 3) Data remote

Click “Data remote”, Register new account and login (See Step1~Step3); then login the remote account.

The 'Register' dialog box contains the following fields and values:

- Account : test10
- Pass : \*\*\*\*\*
- Pass again : \*\*\*\*\*
- Name : Alina
- Telephone : 18926595573
- Company : RDing Tech

An 'OK' button is located at the bottom of the dialog.

Step 1

The 'Data remote' dialog box contains the following fields and values:

- Account : test10
- Pass : \*\*\*\*\*
- Remember your account password

A 'Login' button is located below the fields. At the bottom, there is a note: "Note: after login successfully, enter remote state" and a link for "Account registration".

Step 2

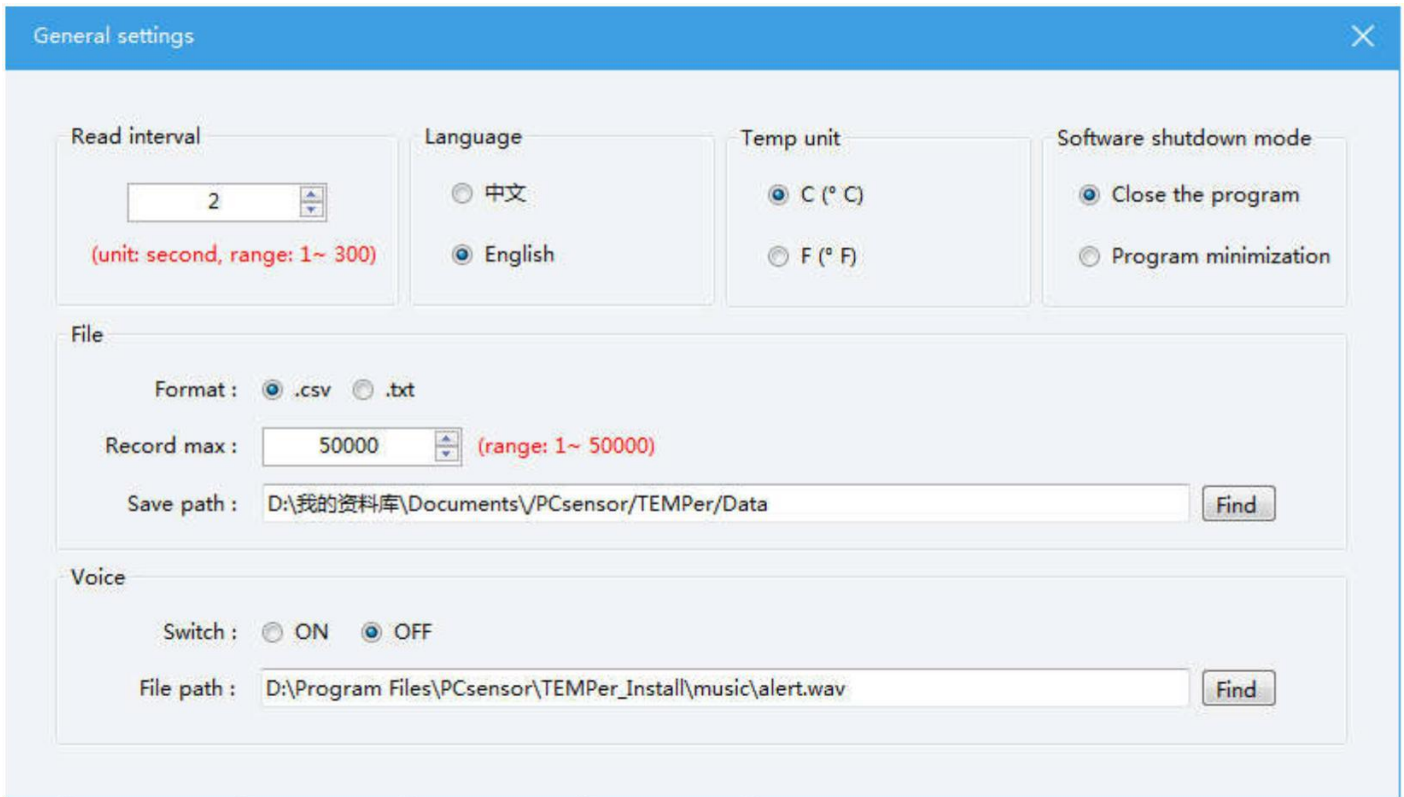






## 5) SETTING

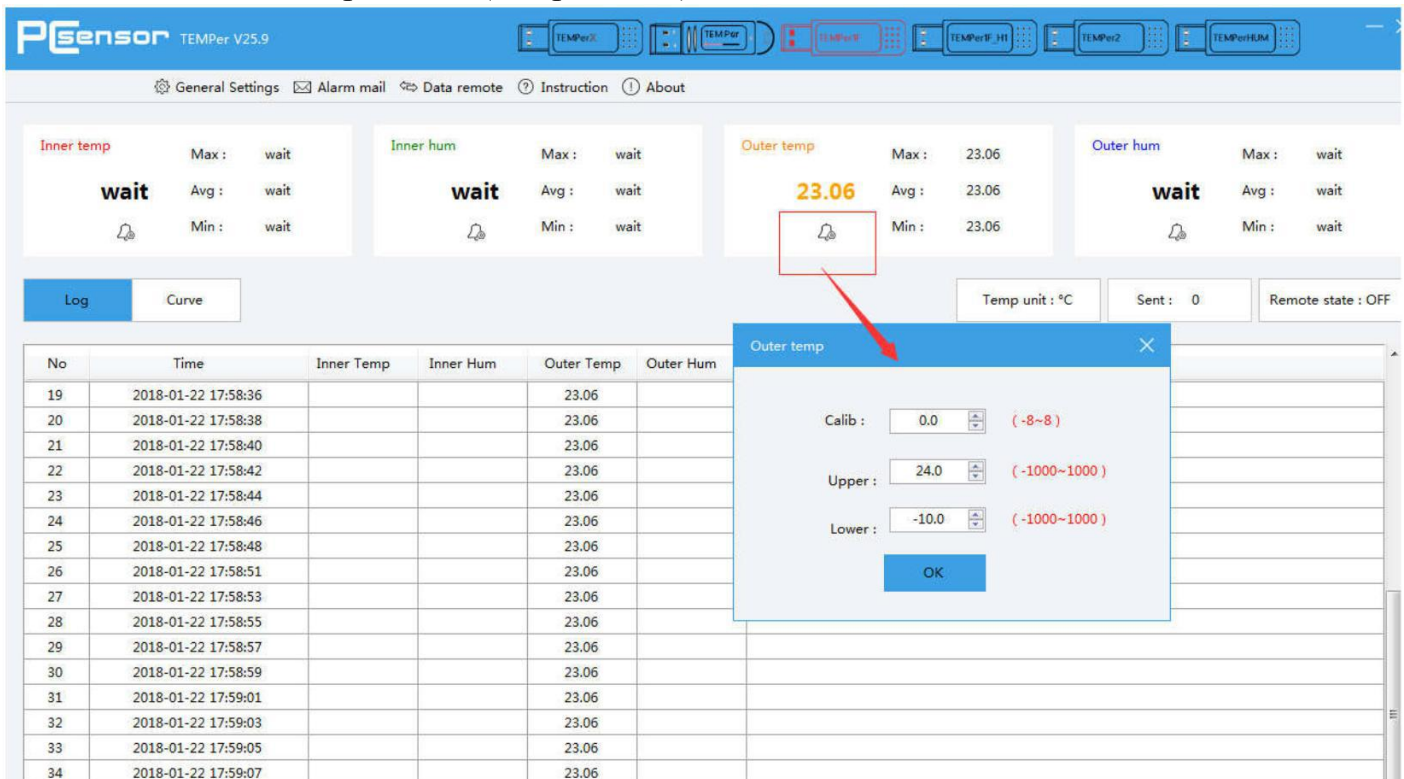
Click “General settings”, see the picture 6.



Picture 6

## 7) ALARM SETTING

Each sensor has an alarm bell, Select the corresponding alarm bell to set the temperature of alarm and calibrate temperature. (See picture 7)



See picture 7

#### 4) EMAIL FUNCTION

Fill in the Related Information of Email and Save it. The Requirement of Send Email: Support POP3/SMTP and Other Server Port. Receive Email you can fill in two.

Related Function: 1) when the Alarm is on, it will send the Email to Specified Email Box Automatically if the Temperature Reach the Alarm Limit. 2) It can send Email Continuously to the Specified Mail Box. You can set the Sending Interval, and then it will send the Email to the Specified Mail Box at Set Intervals. (See picture 8 ~Picture9)

Alarm mail

Send email

Account : sales@pcsensor.com

Password : \*\*\*\*\*

SMTP : smtp.pcsensor.com

Port : 2626

Receive email

Name1 : tech\_support@pcsensor.com

Account1 : Alina

Name2 :

Account2 :

Send content

Theme : temperature alarm

Content : temperature alarm test

Send mode

Alarm

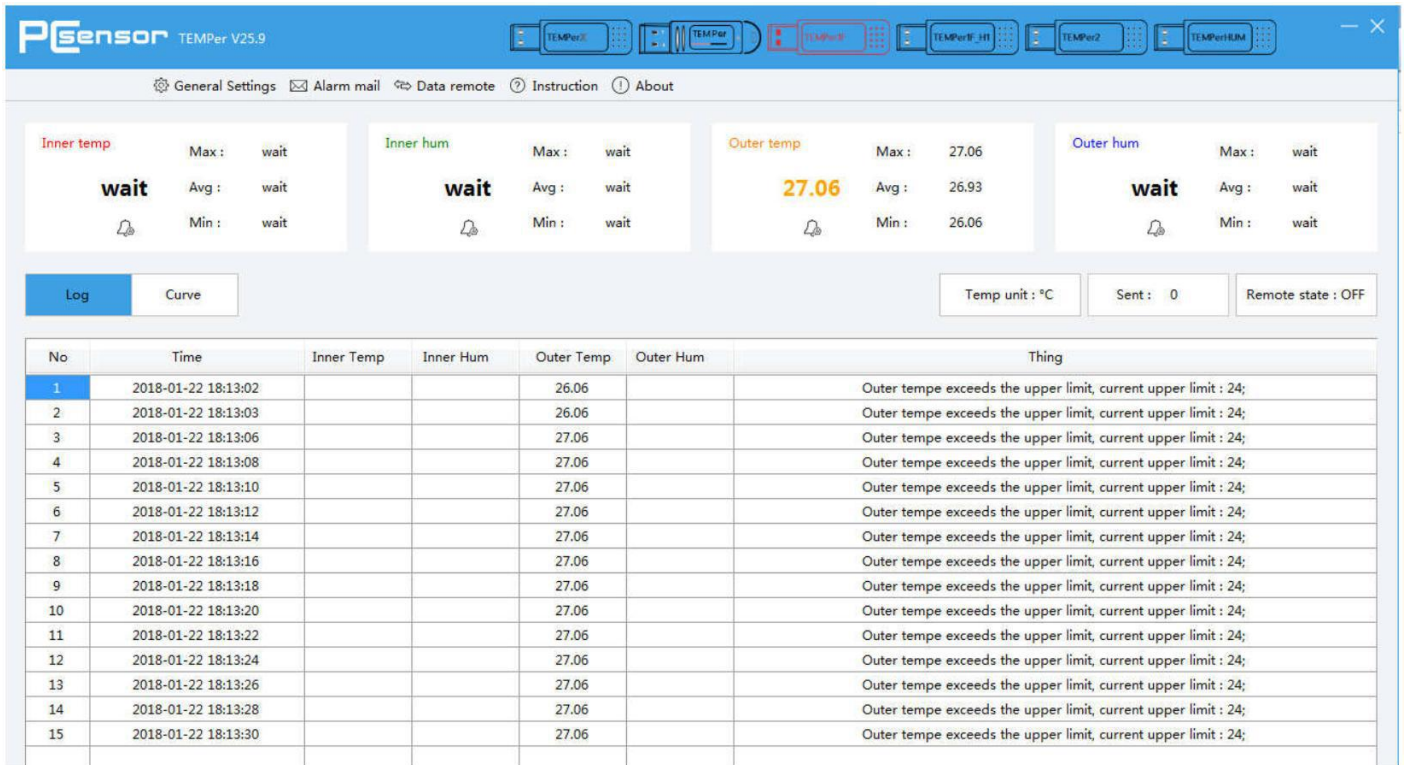
Continuous 1 (unit: minute)

Email status

ON  OFF

Save

Picture 8 Email Setting



Picture 9 Email setting

## 5. Packing specification

Name of the part	Specification	Quantity
TEMPerHUM		1
Driver CD	3.5inch	1
USB extended cable	0.8m	1
Product Verification Certificate	-	1

(Weight of TEMPerHUM: 70g)

(NOTICE: In order to reduce the volume of goods and reduce the freight, and sometimes we will get rid of plastic packaging products)

## 6. Certificate





Shenzhen Toby Technology Co., Ltd.  
 10F, A Block, Jiao R & D Bldg, No.5 Songpingshan Road,  
 Science & Technology Park, Nanshan District, Shenzhen, China

### DECLARATION OF CONFORMITY

No.: TB10077974

**Applicant** : ShenZhen RDing Tech Co., Limited  
**Address** : Room 406, 4/F, 1st Unit, 5 Building Majialong Industry park,  
 Nanshan District, Shenzhen City, Guangdong Province, China  
**Manufacturer** : ShenZhen RDing Tech Co., Limited  
**Address** : Room 406, 4/F, 1st Unit, 5 Building Majialong Industry park,  
 Nanshan District, Shenzhen City, Guangdong Province, China  
**Product** : USB thermometer  
**Models** : TEMPer, TEMPer1, TEMPer2, TEMPerNTC, TEMPer232,  
 Tx(TD-T127)

**Test Standards:**

EN 55022:2006+A1:2007;  
 EN 55024:1998+A1:2001+A2:2003.

The EUT described above has been tested by us with the listed standards and found in compliance with the Council Directive 2004/108/EC. It is possible to use CE marking to demonstrate the compliance with this EMC Directive.

The certificate applies to the tested sample above mentioned only and shall not imply an assessment of the whole production. It is only valid in connection with the test report number: TB-EMC107414.



Justin Zhang  
 (Manager)  
 Jul. 05, 2010



Shenzhen Toby Technology Co., Ltd.  
 10F, A Block, Jiao R & D Bldg, No.5 Songpingshan Road,  
 Science & Technology Park, Nanshan District, Shenzhen, China

### VERIFICATION OF CONFORMITY

No.: TB10077975

**Applicant** : ShenZhen RDing Tech Co., Limited  
**Address** : Room 406, 4/F, 1st Unit, 5 Building Majialong Industry park,  
 Nanshan District, Shenzhen City, Guangdong Province, China  
**Manufacturer** : ShenZhen RDing Tech Co., Limited  
**Address** : Room 406, 4/F, 1st Unit, 5 Building Majialong Industry park,  
 Nanshan District, Shenzhen City, Guangdong Province, China  
**Product** : USB thermometer  
**Models** : TEMPer, TEMPer1, TEMPer2, TEMPerNTC, TEMPer232,  
 Tx(TD-T127)

**Test Standard:**

FCC Part 15: 2008 Subpart B.

This device complies with Part 15 of the FCC rules, operation is subject to the following two conditions:

- (1) This device may not cause harmful interference, and
- (2) This device must accept any interference received, including interference that may cause undesired operation.

This is the results of test that was carried out by Shenzhen TOBY Technology Co., Ltd From the submitted type samples of the product is conformity with the specification of the respective standards.

It is only valid in connection with the test report number: TB-FCC107415.



Justin Zhang  
 (Manager)  
 Jul. 05, 2010



**Note:** If you want to download the latest software, please click here:[www.software.pcsensor.com](http://www.software.pcsensor.com)