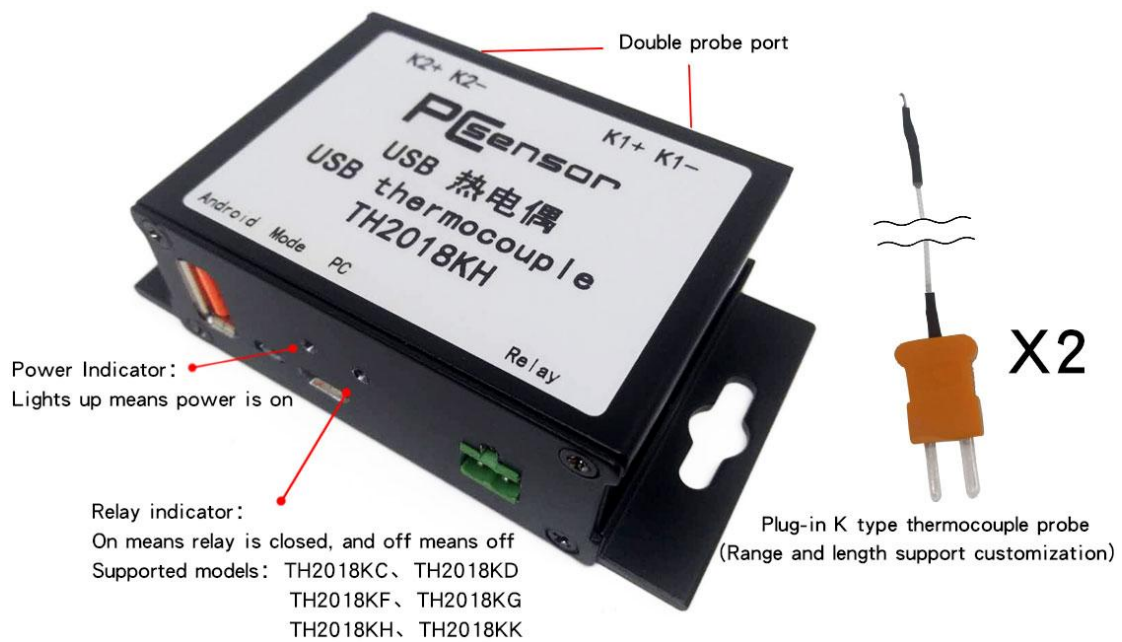


# USB thermocouple meter

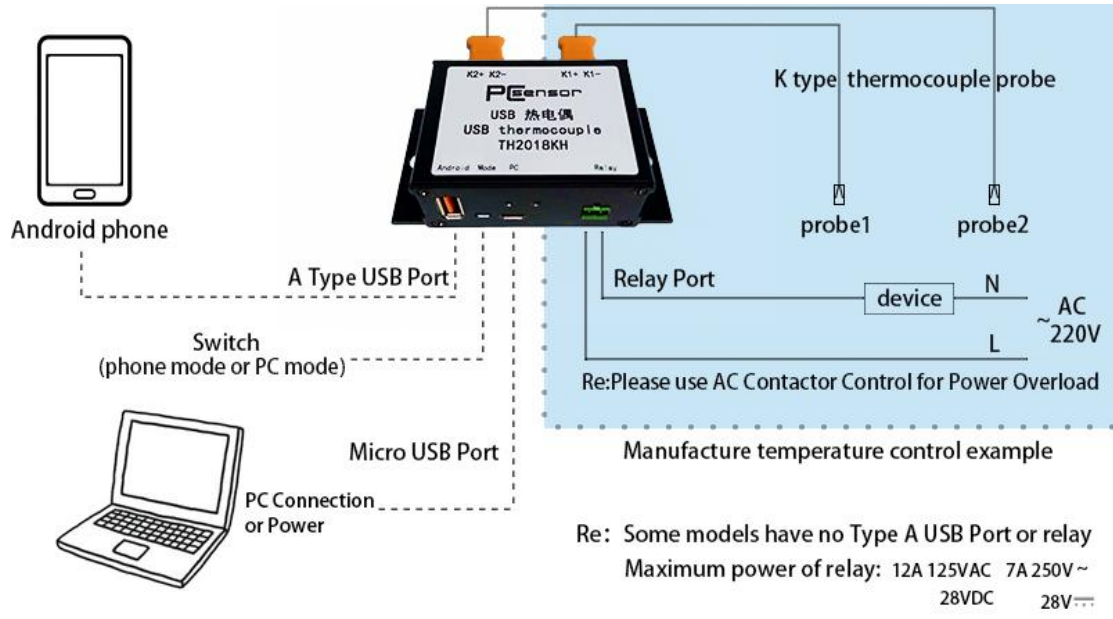
TH2018KH

## Product overview

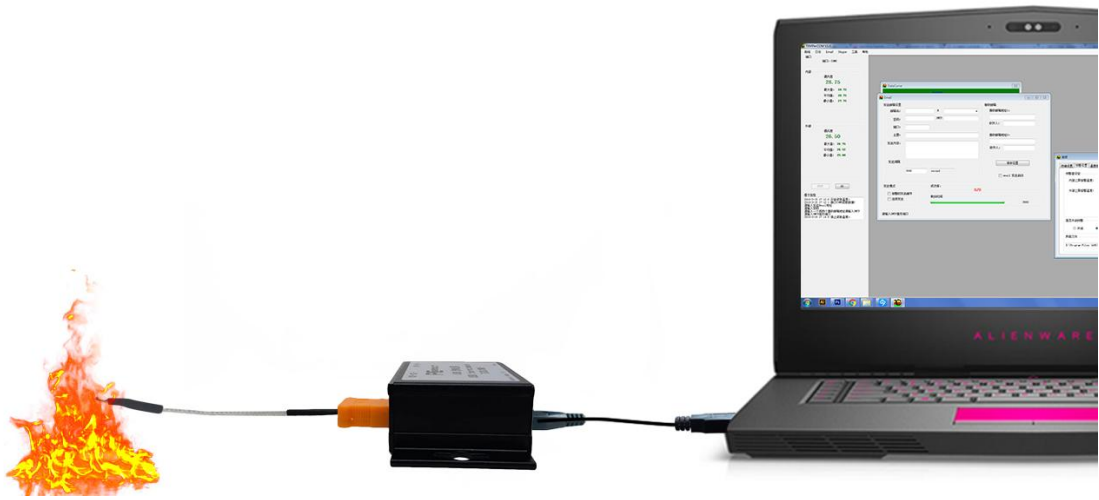
TH2018K series product is a real-time thermocouple thermometer, making full use of the hardware resources of mobile phone and computer, which used with mobile phone or computer. With exquisite appearance and Standard K type thermocouple probe ,the temperature range of this product is-200℃~1024℃. In addition,the product is equipped with a temperature-measuring chip, temperature range is -40℃~125℃, which can monitor the internal temperature when the product is running.



# System framework and local connection



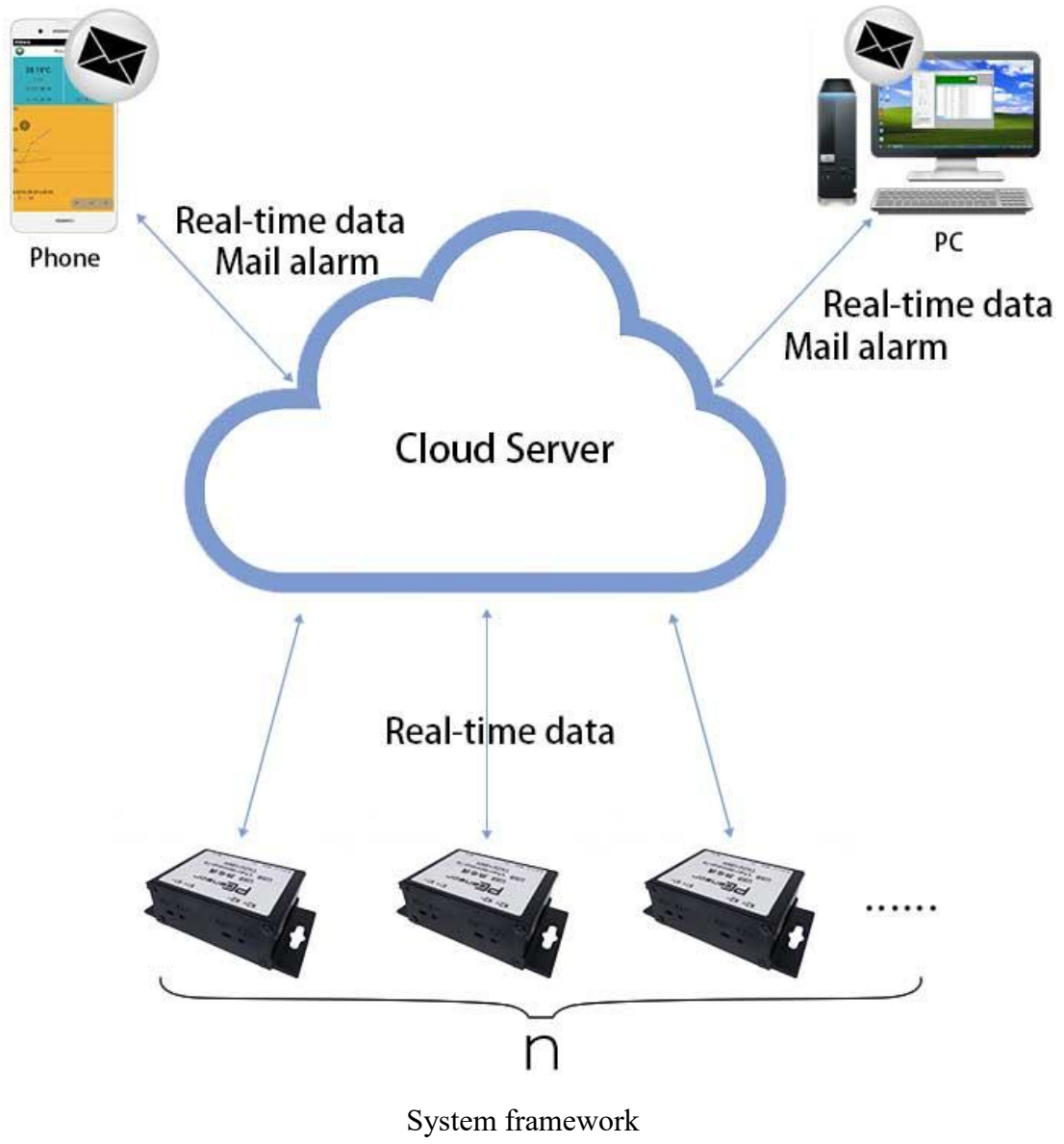
## Local connection



Computer connection



Mobile phone connection



## Industry comparison





Product Features	USB thermocouple meter	Traditional thermocouple meter
Redevelopment	Support	Not Supported
Software	Phone/PC	Not Supported
Remote alarm	Support	Not Supported
Relay	Support	Not Supported
Thermocouple isolation	Support	Not Supported
Data to file	Support	Not Supported
Log curve display	Support	Not Supported



## TH2018K series comparison

If the device under test is powered, please use our isolated thermocouple meter for preventing damage to the phone or computer

If the temperature range to be measured is wide, please use our wide range type thermocouple meter

If your probe is plug type, please chose our plug-in thermocouple meter.

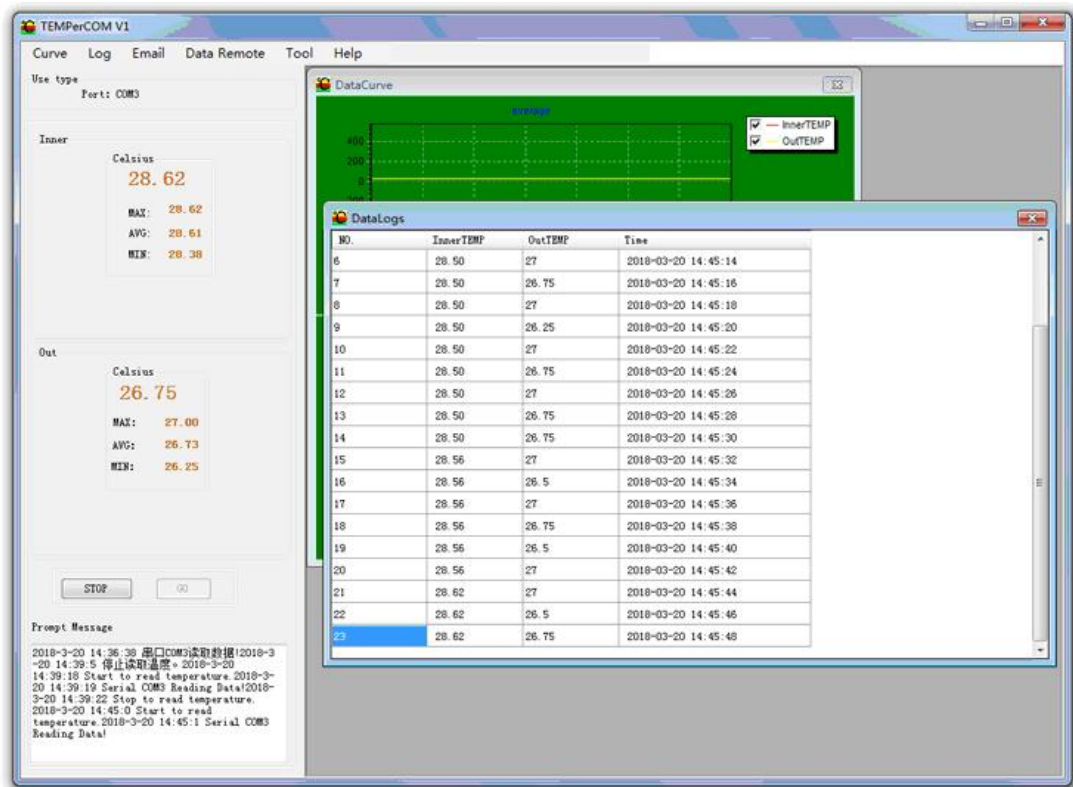
Non-isolated thermocouple meter					
Features Type	A Type USB Port	Android	Relay	Port	Temperature range
TH2018KA	✓	×	×		0~1024℃
TH2018KB	✓	✓	×		0~1024℃
TH2018KC	✓	✓	✓		0~1024℃
TH2018KF	✓	✓	✓		-200~+700℃
TH2018KH	✓	✓	✓		0~1024℃

Isolated thermocouple meter					
Features Type	A Type USB Port	Android	Relay	Port	Temperature range
TH2018KD	✓	✓	✓		0~1024℃
TH2018KK	✓	✓	✓		0~1024℃
TH2018KG	✓	✓	✓		-200~+700℃

- a) **USB Port:** Using USB port, the device communicates with the host computer.
- b) **Thermocouple Isolation:** thermocouple probe circuit and internal circuit isolation, to avoid damage the computer when measure temperature of high voltage equipment.
- c) **Android :** Supports Android APP for monitoring (only single-mode operation is supported, and Micro USB Port is used as power in mobile mode)
- d) **Relay:** It can be connected to external boilers, motors and other equipment to control the on/off of the equipment by judging the temperature.
- e) **Buzzer:** When the temperature exceeds the threshold range, the buzzer will beep.
- f) **Outer measurement range :** K-type thermocouple probe temperature measurement range

# Software introduction

## Real-time Temperature Measurement



View real-time temperature data via a computer connected device



## Mail alarm

The screenshot shows the 'Option' dialog box with the 'Storage' tab selected. The 'Data File' field is set to 'D:\用户目录\我的文档\PCsensor\TI' and has a 'browse' button. The 'file types' section has two radio buttons: '.CSV' (selected) and '.TXT'. The 'Max Record Num:' field is set to '99999'. The 'Read interval (sec.):' field is set to '2' and the 'Max Curve Num:' field is set to '10000'. A 'Save' button is located at the bottom center of the dialog box.

Set the alarm threshold, set the send mode to be “Send mail when alarming”, then, through the mailbox SMTP service, the software will send an alarm email to the aim mailbox when the measured temperature exceeds the alarm temperature.

## Remote data



Users can view data on a computer or mobile phone without a connected device by registering an account.

## Data to file



The software automatically stores the measurement data as a file. The user can set the file type and storage path.

Software Download link: [http://software.pcsensor.com/pc\\_en.html](http://software.pcsensor.com/pc_en.html)

## Product features

- Support COM port mode, free to provide secondary development instruction text and instructions.
- The device uses a metal shell, which can well shield external interference, batch order can be printed LOGO.
- Dual-channel plug-in design for easy to insert and replace probes.
- The device has two modes: PC and mobile, we provide Android App. Some of types support the mobile model including: TH2018KB, TH2018KC, TH2018KD, TH2018KF, TH2018KG, TH2018KH, TH2018KK.
- Provide Windows driver、 Windows supporting software, support for data storage, can be set to alarm threshold, automatically send alarm mail, curve display and other functions.

## Specification



Size

## Hardware parameters

Working Voltage: +5V

Working current: <100mA

Rated Power: <0.5w

Power support mode: USB

Internal temperature range: -40~+125°C

Internal temperature resolution: 0.01°C

Internal temperature precision: ±2°C

External temperature range: 0~400 °C

External temperature resolution : 0.25°C

External temperature precision: ±2°C

Weight (including packaging): ≈ 179g

Thermocouple Material: Metal

## Packing List



Name	Number
TH2018KH	1
K Type thermocouple probe	2
Driver Disc	1
USB Line	1
Power adapter	1
2Pin Prot	1