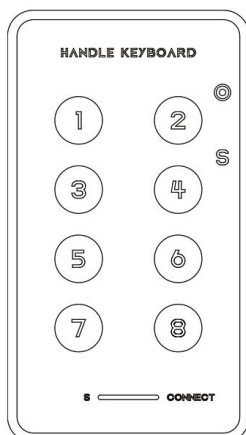


HK825 Series Product Manual

一、Product Images



二、Product Description

HK825 is a customizable handheld keyboard that allows you to define key functions via its companion software. It supports keyboard, mouse, string printing, multimedia, and macro definition capabilities. Features are described below:

1. Keyboard Function: Can be configured to any key value or key combination (including F13 to F24, etc.), such as assigning the function to key A or CTRL+A.

2. Mouse Functions: Can be configured for left, middle, and right mouse button functions, as well as forward and backward navigation keys. Additionally, it supports X and Y-axis movement and vertical scrolling via the mouse wheel.

3. String printing: Supports printing up to 38 characters, e.g., setting www.pcsensor.com.

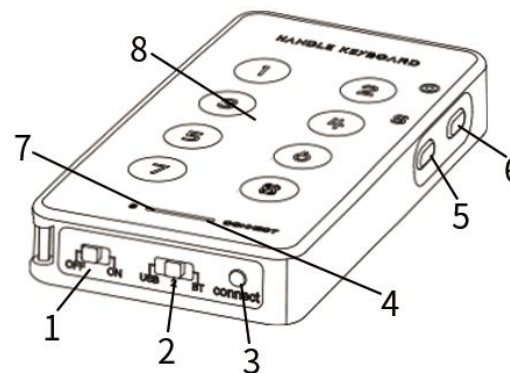
4. Multimedia Functions: Supports multimedia functions such as previous song, next song, volume up, and volume down.

5. Macro Definition Function: Enables the definition of a series of keyboard and mouse actions. For example, configure Ctrl+P to automatically print by pressing Enter after a 100ms delay.

三、Product Specifications:

- | | |
|--|--|
| 1. Product Name: Palm Keyboard | 2. Bluetooth Communication Range: $\geq 10m$ |
| 3. Bluetooth Version: Bluetooth 5.4 | 4. 2.4G Communication Range: $\geq 10m$ |
| 5. Power Supply: Lithium battery, Dry cell battery | 6. Connection Methods: Bluetooth, 2.4G, USB |
| 7. Switch Lifespan: 50 million times | 8. Product Weight: 0.057KG |
| 9. Product Dimensions: 10*5.5*1.5CM | |

四、Product usage:



1. OFF/ON: Refers to the “power switch.” OFF indicates power is off, ON indicates power is on.

2. Mode Selection Switch: Select USB, Bluetooth, or 2.4G mode.

3. Connect button: Press and hold for 3 seconds to enter pairing mode.

4. Connect Light: Red light (Bluetooth mode); Green light (2.4G mode); Blue light (USB mode).

Light patterns: 1-second interval flashes (fast flash)

5. S Key: Key value layer switching. Single press switches key value layers. Factory default is single-layer only. After adding second or third layers via software, press S to cycle through them. Each layer supports distinct function configurations.

6. Laser Switch: Controls laser on/off. Laser control modes can be configured via the host computer.

Mode 1: Press once to turn laser on; press again to turn off.

Mode 2: Press and hold to turn laser on; release to turn off.

7. S Light: Indicates key value layer after pressing the S button — red light (Layer 1), green light (Layer 2), blue light (Layer 3). A single-color flashing S light indicates normal charging status; a steady S light indicates the battery is fully charged.

Note:

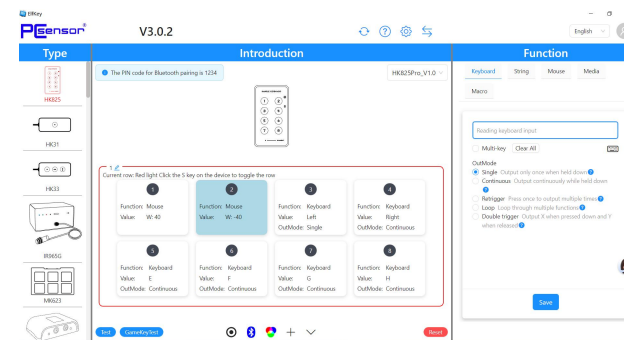
The ElfKey software can only be used to configure the product's output functions when connected to a computer in USB mode. Standby mode is unavailable while the laser is activated or during charging.

Bluetooth Connection: To switch to Bluetooth mode, press and hold the “Connect” button for 3 seconds. The connection mode indicator will flash red every 2 seconds (slow flash) to enter pairing mode. Enable Bluetooth on your computer or phone, select the device whose model name begins with the device name, click to connect. After successful connection, the connection mode indicator will remain solid red for 2 seconds, then flash multicolored lights as a confirmation before turning off.

2.4G Connection: Switch to 2.4G mode and insert the included receiver into your device. Once connected, the connection mode indicator will remain solid green for 2 seconds, then flash multicolored lights before turning off (no pairing required). To re-pair the 2.4G receiver, press and hold the “connect” button for 3 seconds in 2.4G mode to enter pairing state. Insert the receiver into your computer. When the device is near the receiver, it will automatically pair. Upon successful pairing, the connection mode light will remain solid green for 2 seconds, then flash multicolored lights before turning off.

五、 Software User Guide

Software download address: software.pcsensor.com Download the latest version of ElfKey software, install and run it. Switch the device to USB mode (blue light on), then connect it to your computer via USB cable for setup. The software currently supports Windows and Mac systems.



Software Interface

To modify key functions using ElfKey software, follow these steps:

1. Switch the device to USB mode (blue light mode);
2. Connect the device to your computer via USB port;
3. Run the ElfKey software;
4. Click to select the corresponding settings window;
5. Click or enter the function you wish to assign;
6. Click the “Save” button to complete the configuration.

Sleep Time: Tap “Bluetooth Settings.” In the Sleep Time input field, you can set the duration before the device enters sleep mode when no action is detected (no button presses).